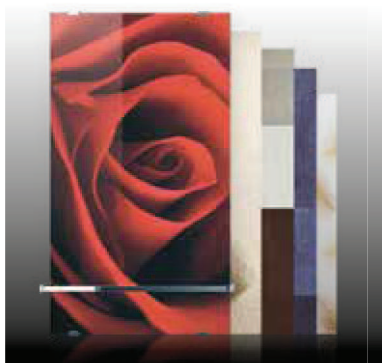


SOLE

CRYSTAL RADIATORS.



◀ 31 images - 3 colors and mirror finishes



◀ Chromed aluminium profiles



◀ Touch screen remote control



An electric radiator with a screen-printed crystal panel tempered with In Art technology, can be installed vertically or in horizontal. The "Sole" radiator by Novellini it's the complement right for the bathroom and beyond: thanks to the decorative or in the mirror version fits to any ambient and style. The panels are made of glass safety laminate: the splash protection of water it's ensured and can therefore be used in safety.

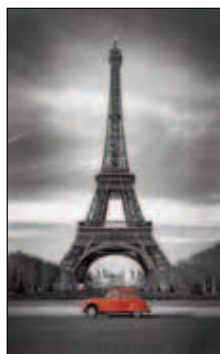


SOLE

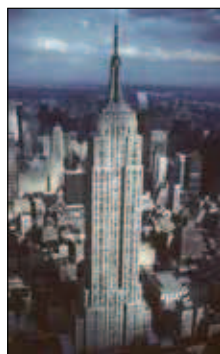
SOLE / STANDARD DECORATION OPTIONS



Code **N0041**



Code **T0011**



Code **A0011**



Code **R0021**



Code **N0031**



Code **T0211**



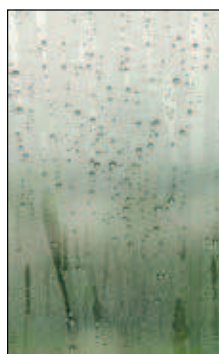
Code **A0031**



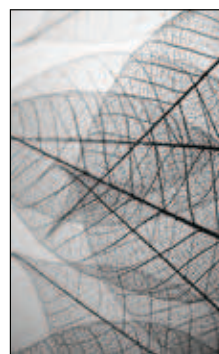
Code **T0241**



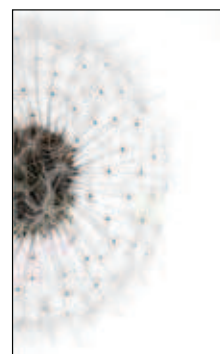
Code **T0081**



Code **T1410**



Code **TA180**



Code **T0071**



Code **N0011**



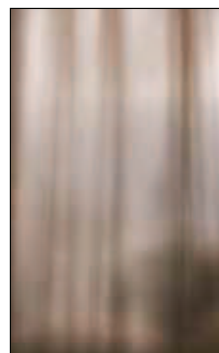
Code **T0171**



Code **R0061**



Code **FR010**



Code **FR020**



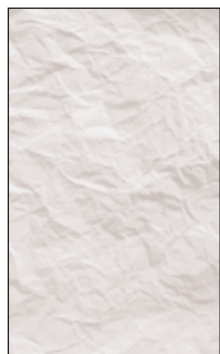
Code **FR030**



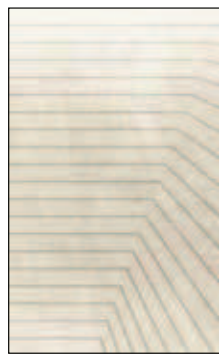
Code **FR040**



Code **FR050**



Code **FR060**



Code **GR010**



Code **GR020**



Code **GR030**



Code **GR040**



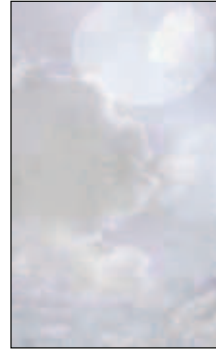
Code **GR050**



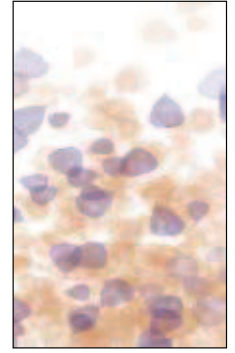
Code **GR060**



Code **GR070**



Code **IR010**



Code **IR020**



Code **IR030**



Code **IR040**



Code **IR050**



Code **IR060**



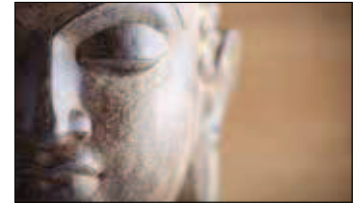
Code **T5410**



Code **A5021**



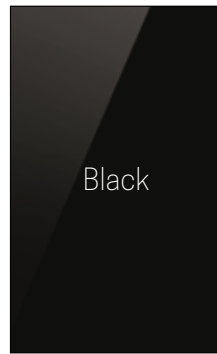
Code **T5221**



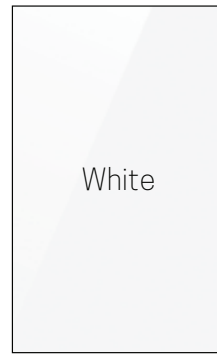
Code **R0071**



Code **IR070**



Code **CA020**



Code **CA010**



Code **SA010**

THERE MAY BE SLIGHT COLOUR VARIATIONS FROM THE BROCHURE IMAGES, TO THE FINISHED PRODUCT.

TEMPERED SAFETY GLASS

THICKNESS 13 mm (6+1+6 mm)

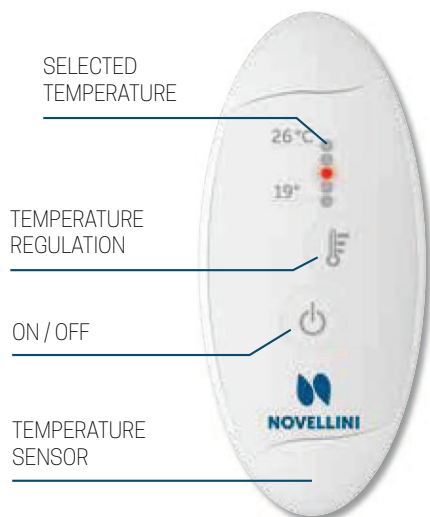


Sole design radiators are made of tempered safety glass with a protection level IPX5. Being waterproof they are perfectly suitable to be installed in a bathroom.



AVAILABLE IN TWO VERSIONS

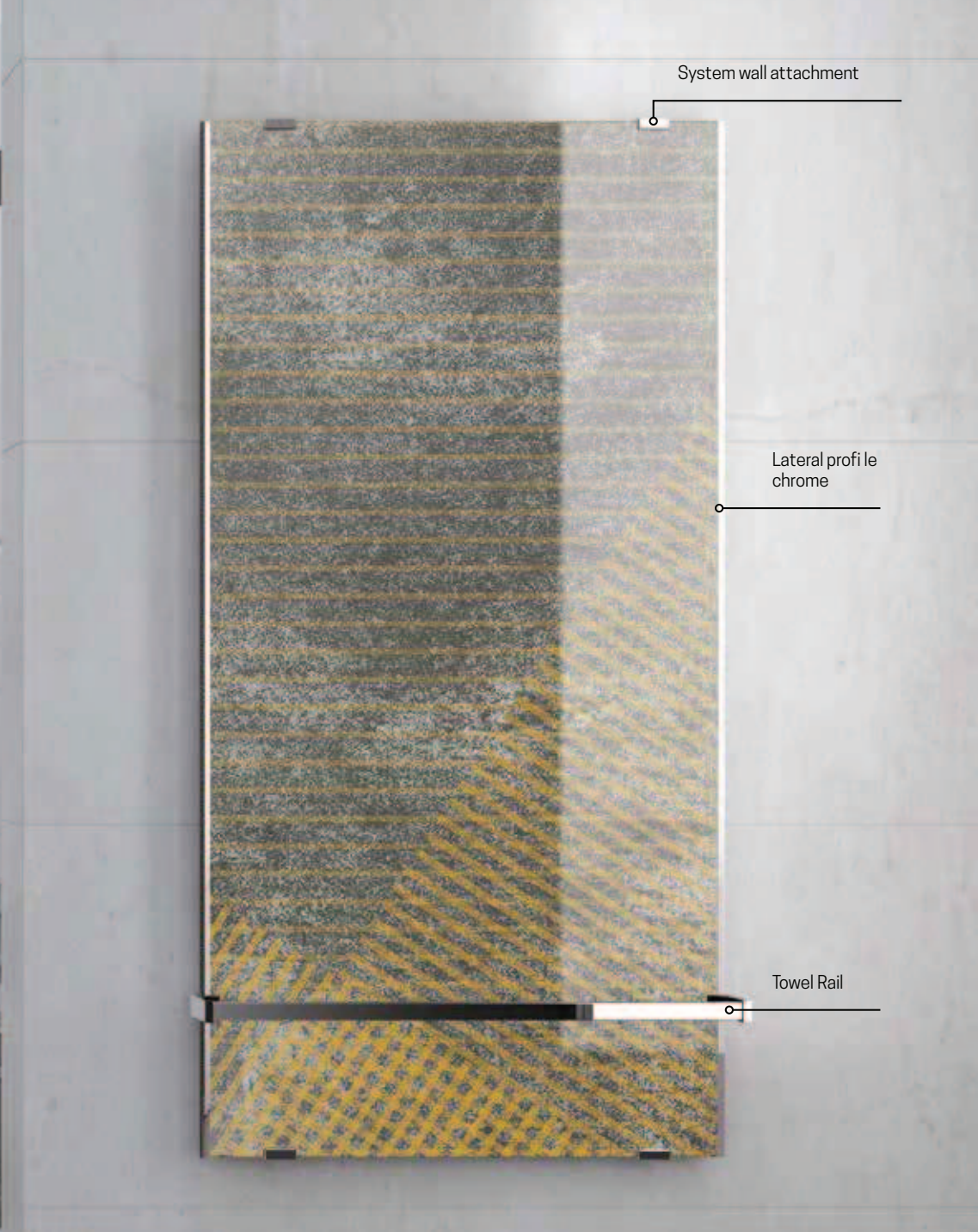
SOLE WITH REMOTE CONTROL



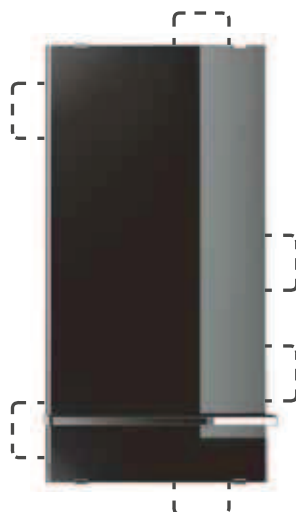
NEW ELECTRONIC PARTS

Can be installed independently or connected to the heating system

NEW BATTERY SAVING SYSTEM



SOLE **EXTRACTABLE CONTROL PANEL**



- Removable panel. When closed it is hidden behind the radiator
- It can be installed at any side of the radiator.
- Equipped with screen motion sensor
- "Touch screen"
- Temperature control
- Programming
- Safety lock
- No battery power

HOW TO CHOOSE YOUR RADIATOR?

The Power required depends on several factors, such as the cubic volume of the room, the thermal transmittance of the building and if the product installed is to be combined with the primary heating system.

HOW TO CHOOSE THE RIGHT SIZE AND POWER?

1

2

CÁLCULO INDICATIVO DA POTÊNCIA

2A REQUIRED IN RELATION TO THE ROOM SIZE AND THERMAL PERFORMANCE OF THE BUILDING

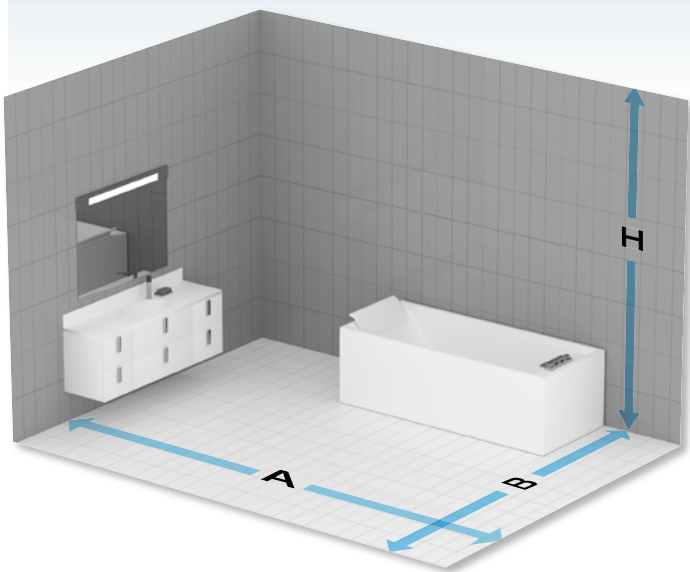
	Thermal transmittance	Necessary Power in W/m^3 (cubic volume of the room)
Good	0.3	30/40 W/m^3
Sufficient	0.5	40/50 W/m^3
Poor	0.8	50/60 W/m^3
Very poor	1.0	60/100 W/m^3

2B DIMENSION CALCULATION OF YOUR GLASS RADIATOR

$$A \times B \times H \times W/m^3 = \text{Overall Power (W) needed}$$

$$\begin{array}{rcl}
 A & \rightarrow & 2,70 \text{ mt.} \times \\
 B & \rightarrow & 1,90 \text{ mt.} \times \\
 H & \rightarrow & 2,70 \text{ mt.} \times \\
 W/m^3 & \rightarrow & 50 =
 \end{array}$$

$$\text{Watt.} \quad \underline{\quad 692 \quad}$$



ATTENTION: for accurate estimation of the BTU or Watts required, we recommend that you seek professional consultation with an accredited heating engineer to evaluate the specific variants that may affect the calculation, such as windows, insulation and walls, ect



Position the radiator
in area only:

③

(IEC 60364-7-701)
(CEI 64 - 8/7)



RADIATOR POSITION INSIDE (the bathroom)

3

REDUCED CONSUMPTION

1800/2500 W



1300/2000 W

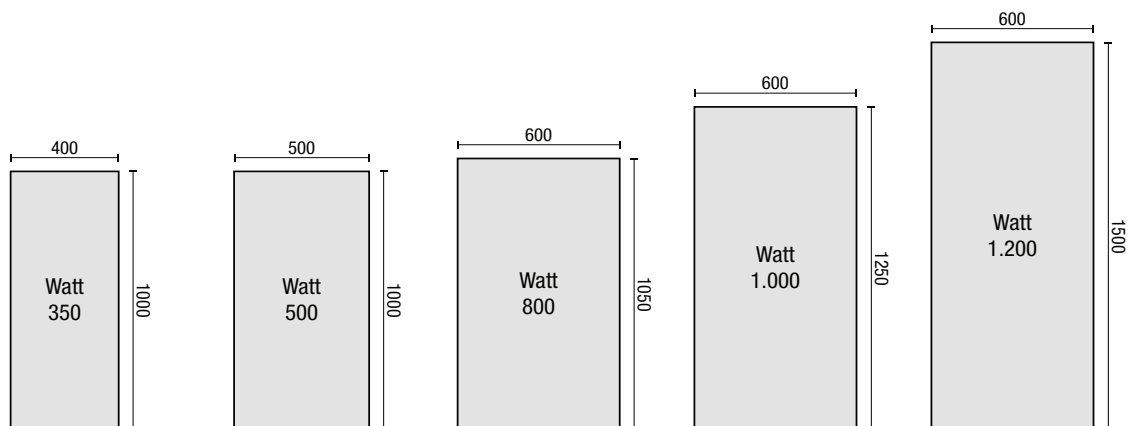


350/1200 W



Electronic temperature control
(máx 70°)

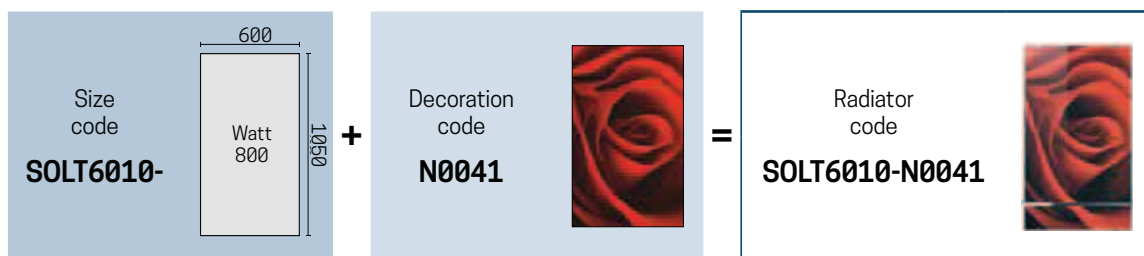
SOLE MODELS, CODES AND PRICES



CODE WITH REMOTE CONTROL	SOLT4010 -	SOLT5010 -	SOLT6010 -	SOLT6012 -	SOLT6015 -
Price					
CODE WITH EXTRACTABLE CONTROL PANEL	SOLP4010 -	SOLP5010 -	SOLP6010 -	SOLP6012 -	SOLP6015 -
Price					

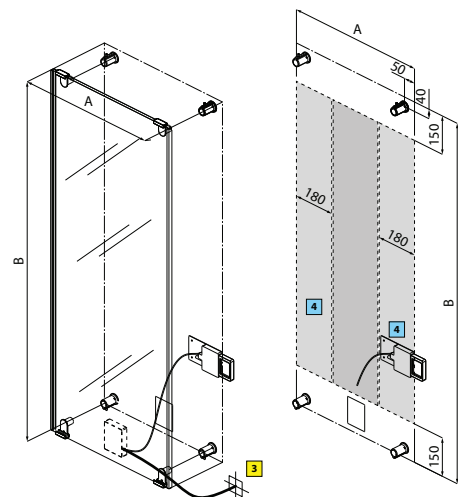
Volt 220-230 - Hertz 50-60 Hz

Construction of the code:

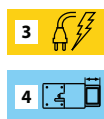
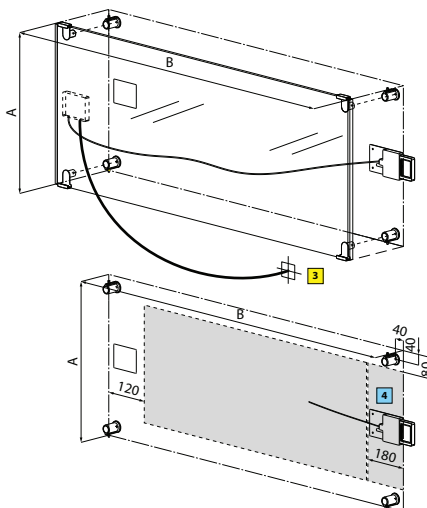


SOLE TECHNICAL DATA

VERTICAL VERSION



HORIZONTAL VERSION

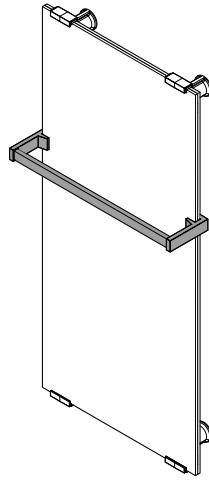


SOLE TECHNICAL FEATURES

TOWEL RAIL

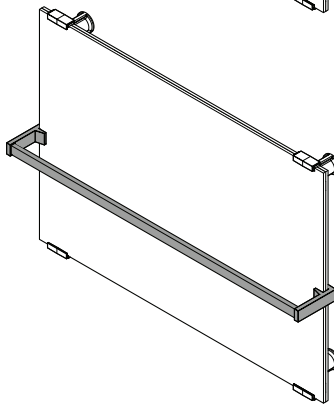


OPTIONAL ADDITIONAL TOWER RAIL



FOR VERTICAL RADIATOR VERSION

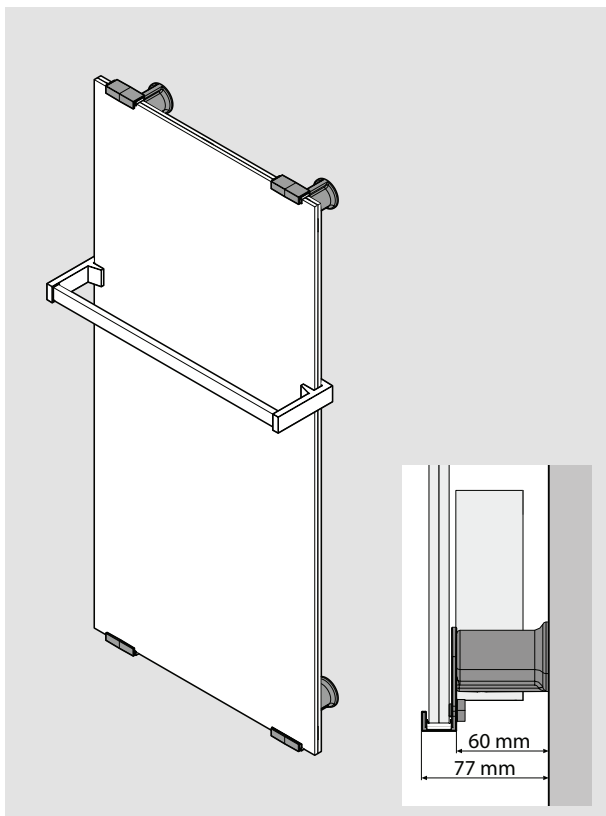
Dimensions (mm)	Code	Price
400x1000	R80SOLP40-K	
500x1000	R80SOLP50-K	
600x1050	R80SOLP60-K	
600x1250	R80SOLP60-K	
600x1500	R80SOLP60-K	



FOR HORIZONTAL RADIATOR VERSION

Dimensions (mm)	Code	Price
1000x400	R80SOLP100-K	
1050x600	R80SOLP105-K	
1250x600	R80SOLP125-K	
1500x600	R80SOLP150-K	

WALL INSTALLATION



STANDARD Chrome

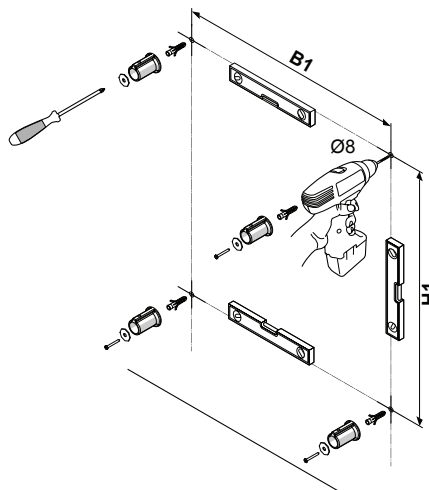


OPTIONAL

Description	Code	Price
Black	R06SOL1-H	
White	R06SOL1-A	

Fastening 4 pieces

EASY INSTALLATION



Dimensions (mm)	H1	B1
400x1000	921	300
500x1000	921	400
600x1050	971	500
600x1250	1171	500
600x1500	1421	500